



## Flexi

Electrical or manual height adjustable frame for worktops  
Gives free access space below worktops for wheelchair users  
Provides the perfect height for everyone to safely reach the work space, hob and sink

- The system raises and lowers worktops by 30cm, simply by pushing a control switch, or by means of a handle.
- FlexiManual is suitable for infrequent adjustment and where a carer adjust the height.
- FlexiElectric is best for frequent adjustment and to increase independence.
- A hob or sink (with flexible plumbing) can easily be inset into standard width worktop.
- Flexi can be made to suit any length worktop from 60-300cm.
- A safety strip should always be used with FlexiElectric to prevent trapping.
- FlexiElectric safety strip can be linked using Smart Boxes to prevent trapping between adjacent worktops.
- Leg covers or concealment panels can be used to totally hide the frame.
- Flexi is ideal in private homes, schools, training kitchens and in sheltered housing.

# FlexiManual and FlexiElectric

FlexiManual standard frame for worktop

55-295cm  
65-95cm

FlexiManual including worktop and fascia

60-300cm  
58-62cm

Handle delivered with the frame 30-67660

Models/ Item	30-65060/ 30-65100	30-65105/ 30-65150	30-65155/ 30-65200	30-65205/ 30-65250	30-65255/ 30-65300
Length of worktop	60 - 100cm 	105 - 150cm 	155 - 200cm 	205 - 250cm 	255 - 300cm 

\* Max. distance between legs is 200cm - it is possible to order Flexi frames with three legs.

FlexiElectric standard frame for worktop

55-295cm  
65-95cm

FlexiElectric including worktop and fascia

60-300cm  
58-62cm

Standard Control Switch 6x3cm  
Delivered with the frame 30-67840

Models/ Item	30-66060/ 30-66100	30-66105/ 30-66150	30-66155/ 30-66200	30-66205/ 30-66250	30-66255/ 30-66300
Length of worktop	60 - 100cm 	105 - 150cm 	155 - 200cm 	205 - 250cm 	255 - 300cm 

\* Max. distance between legs is 200cm - it is possible to order Flexi frames with three legs.

## ROPOX Tips

- Allow a space of 3-5mms either side of the worktop.
- An upstand fitted to the worktop prevents liquids flowing over the back edge.
- Use fascia panels of 5-8cm at the front of the frame.
- FlexiElectric Safety Strips should be fitted below all fascia panels.
- Add Smart Box for each adjacent FlexiElectric.
- The control unit must always be fitted to the underside of the worktop.
- Large press pads are best for limited dexterity but the standard control is more discreet.
- Max. load on the frame is 150kg evenly distributed over the entire frame.

# Flexi Accessories

## Accessories for FlexiManual and FlexiElectric

Support arms for worktop,  
depth 34 - 72cm  
30-67619 - 30-67624



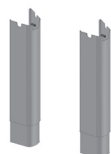
Supporting feet,  
length 30cm or 49cm  
30-67702 - 30-67703



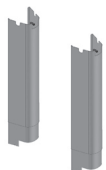
Cable hanger  
30-67685



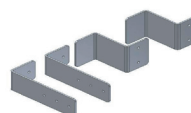
Covers for legs  
without supporting foot  
30-67735 white  
30-67736 stainless steel



Covers for legs  
with supporting foot  
30-67737 white  
30-67738 stainless steel



Fitting for concealment pannels  
30-67760



Distance bracket  
30-67672



Flexible plumbing kit  
40-25754



Sink A-400 incl. insulation plate  
30-45007 - 40x34x14.5cm  
30-45008 - 40x34x10cm



## Accessories for FlexiElectric

Safety strip, length 56-620cm  
30-69056 - 30-69620



Smart Box  
30-69001



Extension cable for safety stop  
30-67870



Spiral extension cable for  
safety stop, length 25-150cm  
30-67871



Extension cable for standard  
control switch and large press  
pad 30-40660



Large press pad  
30-67841



Infra red control  
30-67849



Re-programming of control unit  
reduction of height adjustment  
upwards 30-66010



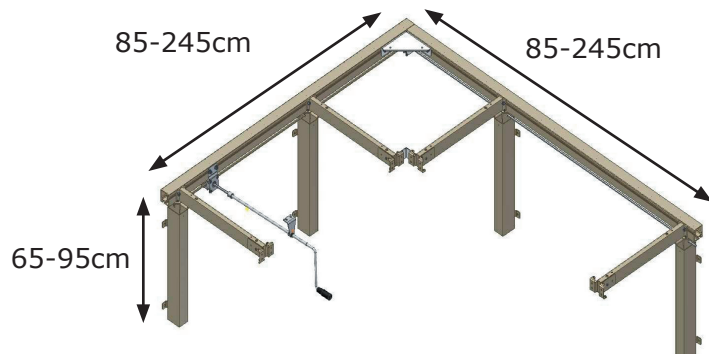
## Accessories for FlexiManual

Electrical kit - Conversion from manual to electric  
30-67866 - frames 60 - 104cm  
30-67867 - frames 105 - 300cm

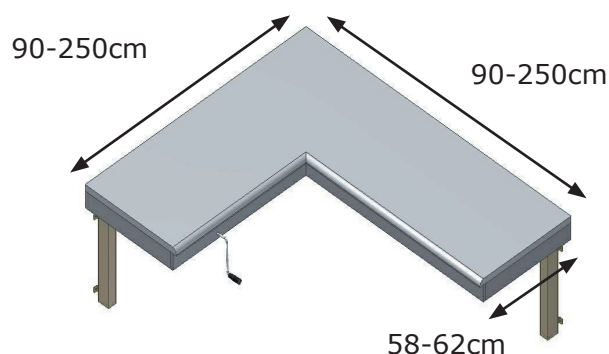


# Flexi Corner

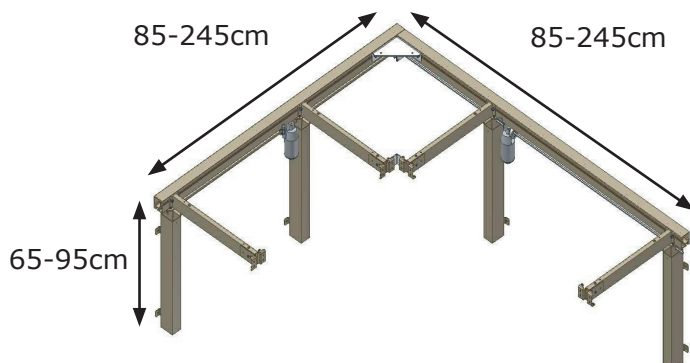
FlexiManual Corner standard frame for worktop



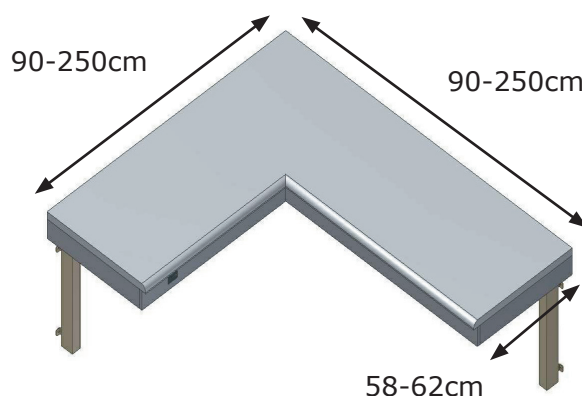
Frame including worktop and fascia



FlexiElectric Corner standard frame for worktop



Frame including worktop and fascia



## ROPOX Tips

- Ideal for single person use of the kitchen.
- Using two separate Flexi frames into a corner would allow for two people to work at different heights - the corner frame suits just one person.
- The hob, sink and preparation area can all be adjusted in one movement.
- Useful if space is limited by maximising the corner area.
- Available in any size up to 250x250cm.
- Economical alternative to two separate Flexi frames.
- Available in manual or electric and with all the Flexi accessories.
- Max. load of frame is 150kg evenly distributed over the entire frame.

**ROPOX**  
BETTER WAYS TO BETTER DAYS

ROPOX A/S  
Ringstedgade 221  
DK-4700 Naestved  
Tel. +45 5575 0500  
Fax +45 5575 0550  
info@ropox.dk  
www.ropox.com