

BB omega

inspirational laminate worksurfaces

welcome to Bushboard

We have been developing kitchen and bathroom surfaces in the UK since 1935 and the idea that everyone deserves great design whatever their budget underpins our entire approach to surfacing.

When you buy a Bushboard product you are buying into our ethos of exceptional quality, exquisite design, excellent value and of course, first class customer care. We are proud that our surfaces are made in the UK.

We want to ensure you get the very best from your new worksurfaces so our products carry a lifetime guarantee as well as a unique installation warranty so you can be sure your Omega worksurface will look sensational for years to come.

follow us on our social media channels...



welcome to Omega

The Omega collection is designed around the latest on-trend colour palettes, smart design and innovative thinking. The expert interaction of class-leading material, colour and texture takes laminate to a new level and makes kitchens come to life.

This Omega range of stunning designs truly reflects the Bushboard ethos of bringing smart surfaces and clever ideas to our customers.

Over the following pages you will find design upon design brought to life in our inspirational collection of Omega worksurfaces, splashbacks and upstands.

Don't forget to follow us online and share your creations using @bushboard.



high quality & durable surfaces



hygienic & antibacterial surface protection



22mm thickness also available



crisp Q3 or square edge profiles



great choice of 50 designs



3m & 4.1m lengths



lifetime product guarantee



3 year joint guarantee

when installed with Complete Adhesive



inspiring design

The desire to create multi-functional spaces that can easily form the hub of the home and suit busy modern lifestyles is at the forefront of today's interior design.

A seamless flow from kitchen to living room is easily achievable with the Omega collection by drawing on the large range of co-ordinating and contrasting surfaces.

We have focused on showcasing a selection of our designs to inspire you and show how our worksurfaces, splashbacks and upstands can work together to create an amazing kitchen space.

You could even order some samples and take a look at our 'get the look' pages and social media for more inspiration and ideas.

Many of our retail partners nationwide have our products on display; a great way to help you decide.

To get visualising and find a showroom near you, visit our website at www.bushboard.co.uk.

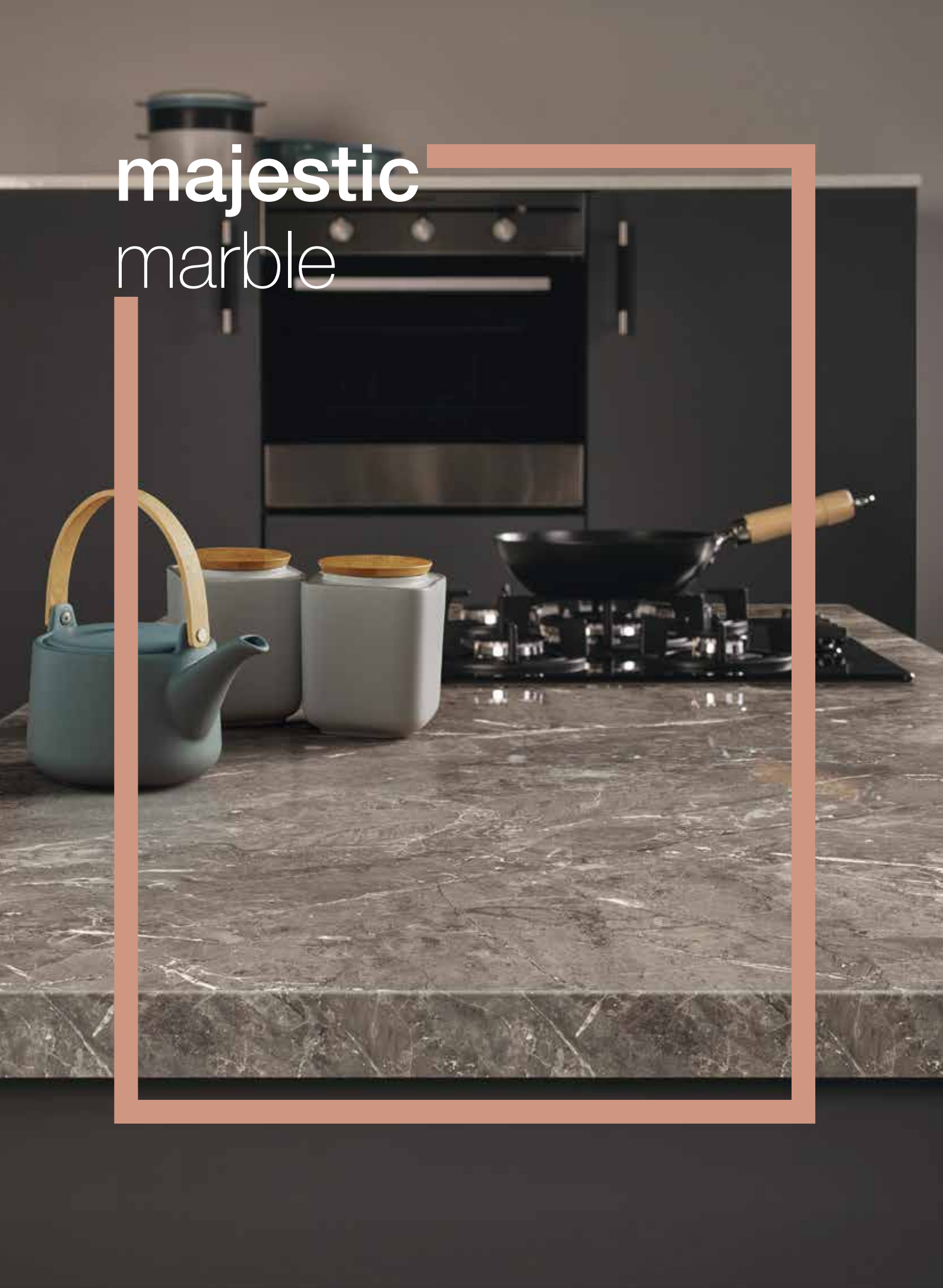
Pictured right: Ellis Stone square edge worksurface and splashback in soft texture.



log on to www.bushboard.co.uk/design-studio and start designing!



majestic
marble



timeless marbles

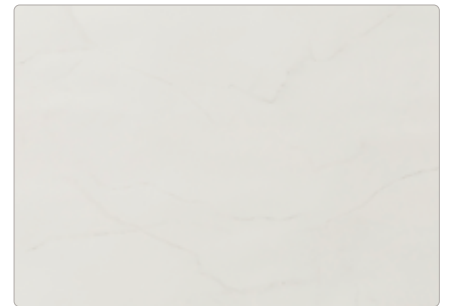
The enduring beauty of marble has been appreciated for thousands of years and continues to be synonymous with style and elegance.

Indicative of the luxurious and uber-sophisticated, marble design is something most kitchens only dream of. Each of our marble decors are different offering various depths of colour and veining and ultimately, a fresh and contemporary take on the trend.

Style with neutral shades or bolder on trend navy's and forest greens to mix the palette.

Not just for the worksurface, consider matching splashbacks to add class and enduring style to a kitchen, creating a truly timeless cooking space.

Pictured left: Cirrus Marble breakfast bar in higloss texture.



Paros Marble ultramatt



Ellis Stone soft



Cirrus Marble higloss



Ice Stone fusion



Murano Marble fa



Bronze Marble fa



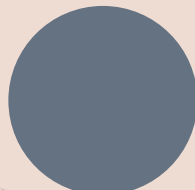
Venetian Marble fa

BB get the look

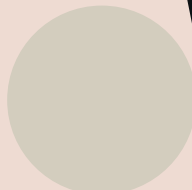


Pictured right:

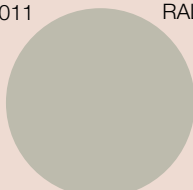
1. Worksurface and splashback:
Murano Marble, fa texture.
22mm with square edge profile.



RAL 7011



RAL 7032



RAL 7044

Inspired?

Why not take these codes
to a paint supplier to get
the look.





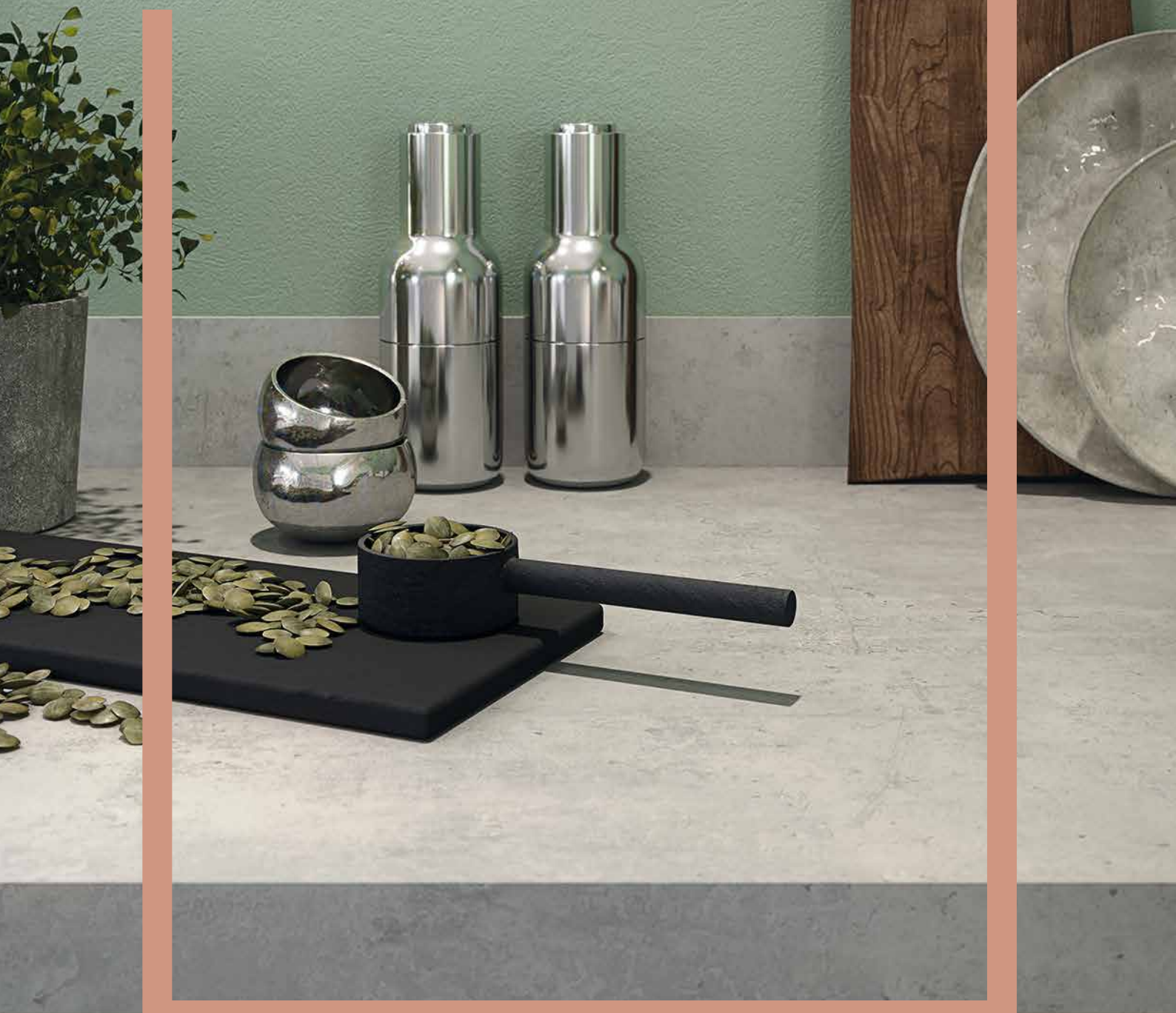


Paros Marble worksurface in ultramatt texture.

Ice Stone worksurface and upstand in fusion texture.



urban minimalism



statement style

The brand new surfaces have been specifically developed to reflect current trends in home design.

Key features are clean lines, expansive surfaces, fuss-free detailing and slimmer profiles that blend with furniture lines. In a space like this there is little opportunity to make a style statement beyond the worksurfaces, so the decor is important.

Over the following pages you will see how the modern, muted tones can deliver an understated contemporary look and feel.

Pictured left: Light Portland 38mm squared edge worksurface in real stone texture pictured with matching upstand.



Calcite ultramatt



Light Portland real stone



Taros Gris ultramatt



Urban Concrete roche



Lumiere ultramatt



Grey Chalk roche



Silver Pebblestone surf



Aticos Gold surf



Salento Stone real stone



Brasilia roche



Marine Terrazzo granit



Urban Caldeira fusion



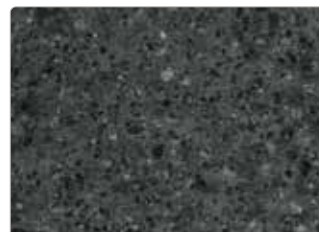
Mon Valley fa



Lima surf



Midnight surf



Pewter Pebblestone surf



Slate roche

MARENA
PESCA
TTI DI BOSCO
STACCHIO
MENTA
NOCCIOLA
RACCIATELLA
COCCO

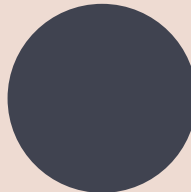


BB get the look



Pictured left:

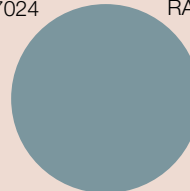
1. Breakfast bar, slab end and worksurface:
Mon Valley, fa texture.
38mm with square edge profile.



RAL 7024



RAL 1013



RAL 7000

Inspired?

Why not take these codes to a paint supplier to get the look.



Marine Terrazzo 22mm square edge worksurface in granit texture, pictured with matching splashback.





Lumiere 38mm square edge breakfast bar in ultramatt texture.



Grey Chalk 22mm square edge worksurface and breakfast bar
in roche texture, pictured with Vista Inner City ice cloud acrylic splashback.

NEW YORK





stunning
woodgrains

full of character

The Omega collection celebrates the appealing look and character of natural woodgrains. These ever-popular designs have evolved, offering rich colour, unique grain patterns and sympathetic texture overlays to deliver a range that is more realistic than ever before.

Add to this a slim 22mm square edge profile and you have a worksurface that perfectly reflects the true nature of timber without any on-going maintenance.

Our collection has something for everyone!

Pictured left: Dark Driftwood worksurface and splashback in nature texture.



Unburnished Grain ultramatt



Cedarwood fibril



Quebec Oak ultramatt



Silvered Oak nature



Light Blocked Walnut fa



Block Broad Oak nature



Stamford Oak ultramatt



Dartington Oak nature



Natural Blocked Oak ultramatt



Tobacco Oak ultramatt



Chene Gris nature



Graphite Oak ultramatt



Dark Driftwood nature



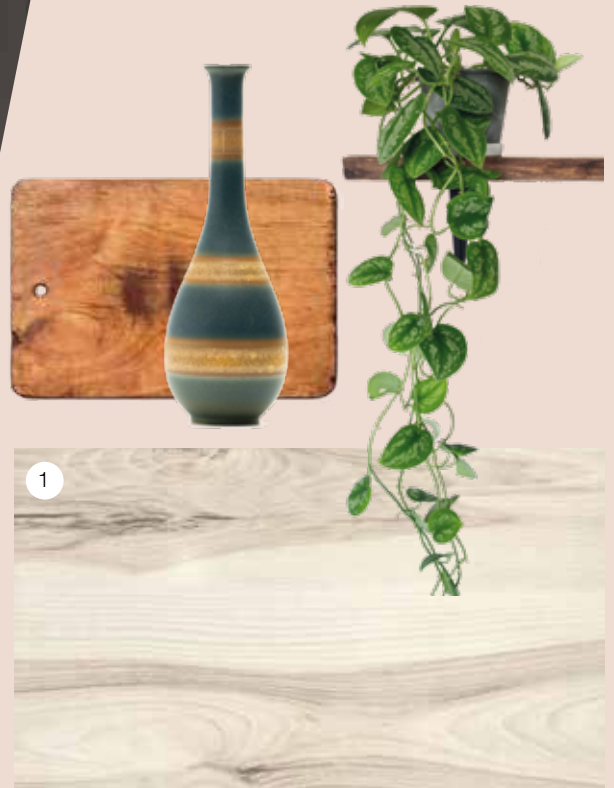
Ebony Stripwood ultramatt



Walnut Flame fibril

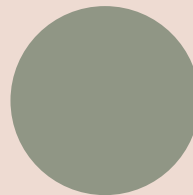


BB get the look



Pictured left:

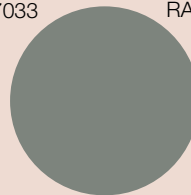
1. Worksurface and upstand:
Unburnished Grain, ultramatt texture.
38mm with square edge profile.



RAL 7033



RAL 9002



RAL 7005

Inspired?

Why not take these codes
to a paint supplier to get
the look.



Silvered Oak 38mm square edge breakfast bar and worksurface in nature texture, pictured with Vista Hazy Forest acrylic splashback.





Graphite Oak breakfast bar in ultramatt texture.

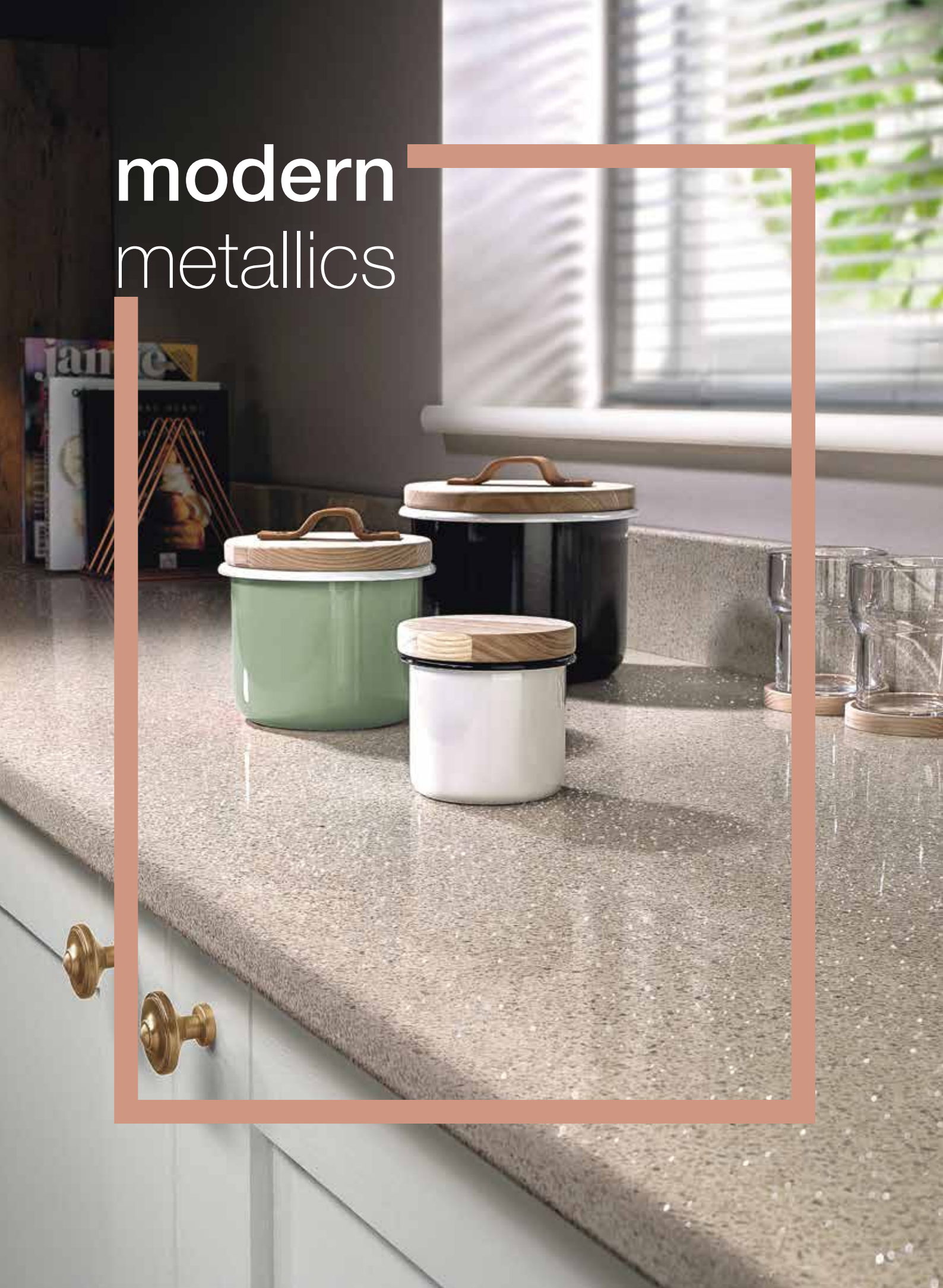
Stamford Oak worksurface and splashback in ultramatt texture





Cedarwood worksurface and upstand in fibril texture.

modern metallics



luxe living

We have utilised the latest innovation in surface technology and design to bring you a laminate worksurface that genuinely reflects the natural beauty of highly polished stone.

Our eye-catching, higloss surfaces are truly aspirational as an affordable alternative to real quartz.

Available in six colourways these surfaces provide a chic and ultra-modern look, adding luxury to the most hardworking of interior spaces.

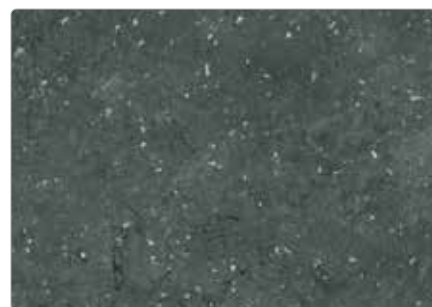
Pictured left: Vanilla Quartz worksurface and upstand in higloss texture.



Doux Lime Quartz fa



White Quartz higloss



Brasilia Quartz higloss



Vanilla Quartz higloss



Cinder Quartz higloss



Black Quartz higloss



BB get the look



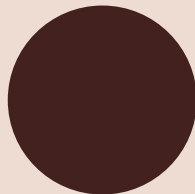
Pictured left:

1. Worksurface and breakfast bar:
Doux Lime Quartz, fa texture.
38mm with square edge profile.

2. Splashback:
Vista Blocked Hex dove.

Inspired?

Why not take these codes
to a paint supplier to get
the look.



RAL 8017



RAL 1019



RAL 9002



Black Quartz worksurface and upstand in higloss texture.





Brasilia Quartz 22mm square edge breakfast bar and worksurface in higloss texture.

we've got the edge

When we put together a collection we set out to ensure every worksurface looks the very best it can. That starts with design, followed by texture and finally profile.

Our 22mm slimline square edge selection gives a wonderfully sleek and streamlined look and we've selected ten designs that are enhanced by this modern profile.

The square, slimmer edge profile helps to create an open-plan living space that has clean lines and flows with other items of furniture within the kitchen and living space.

We can also offer a range of ten 38mm square edge decors which have been enhanced by the crisp slab-cut face edge.

Pictured right: Salento Stone 38mm square edge worksurface in real stone texture pictured with matching upstand.



a guide to texture

Marrying the right texture with the right design is a skill in itself and brings a design to life. We've worked with eleven textures across our range to do just that.

Our textures are carefully chosen to complement each decor and take it from laminate to lifelike.

This quick guide helps you see our textures in more detail and look at the matrix on page 47 to see which texture your chosen worksurface is available in.

Don't forget to use our speedy sample service to see the final result for yourself. Simply visit our website to order yours today!



Roche Heavy matt stone effect



Nature Lined and matt surface finish



Ultramatt Very matt smooth finish



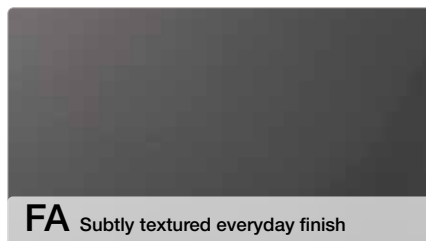
Surf Slightly textured everyday finish



Soft A soft matt surface



Fibril Natural matt texture woodgrain



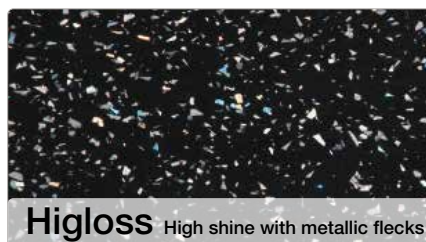
FA Subtly textured everyday finish



Fusion Subtle matt & gloss reflections



Granit Slightly textured with a light sheen



Higloss High shine with metallic flecks



Real Stone Evoking natural stone

sizes and profiles

Worksurface profiles:

**22mm
square edge**

**38mm
square edge**

**38mm
postformed
Q3**

Worksurface lengths:

3000 x 600mm

4100 x 600mm

Breakfast Bar lengths:

3000 x 900mm

4100 x 665mm

4100 x 900mm

Accessories:

**Solid colour
splashback
8mm**

**Patterned
splashback
9mm**

**Acrylic
splashback
4mm**

**Upstand
20mm**

Alloy splashbacks

Uniquely designed with safety in mind.

Bring your dream kitchen to life with a beautifully patterned splashback that fills the entire wall space behind your hob, without compromising safety.

With Alloy, say goodbye to tiles and hello to a high performance, statement splashback you can place wherever you want.

Your Alloy splashback is fire-safe behind any hob and waterproof behind any sink; with simple sizing and no need for an expensive glass cover or to break up your design with a stainless steel hob panel.

Just cut, fit and cook.

Pictured right: Alloy Splashback in Geometry and Omega Venetian Marble worktop



Designed to fit.

You need uncompromising design, so why compromise?

Alloy splashbacks come in four sizes, but you're not limited by the size of the panel you buy – it's easy to cut your panels to the size and shape you need.

High Rise Splashback

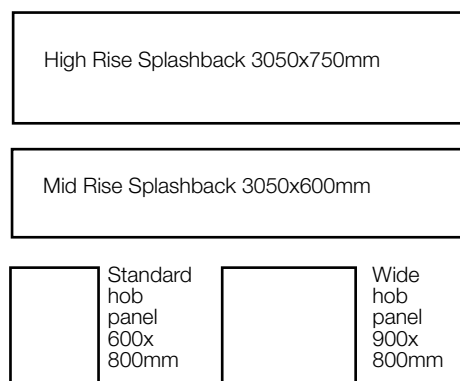
The 750mm height of the high rise splashback allows you to fill the wall right up to hood height with design, whilst being safe in the knowledge it is certified to be there. You don't need to interrupt the design with a different panel type to protect your home.

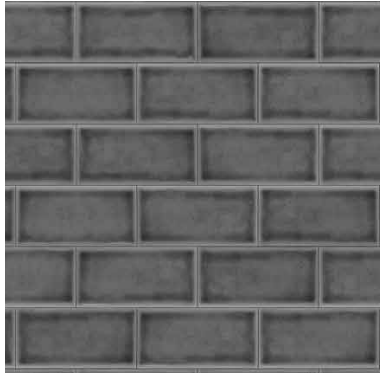
Mid Rise Splashback

The Mid Rise splashback's 600mm height is ideal for use behind a sink, or filling the space behind a hob between worktop and upper cabinets.

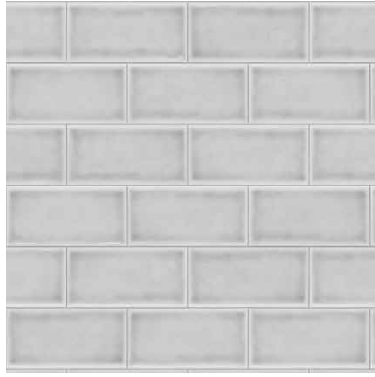
For a focused area of design, a hob panel is the perfect solution. Choose between two different sizes both with an 800mm height.

Visit www.bushboard.co.uk/alloy-splashbacks to learn more and order your free samples.





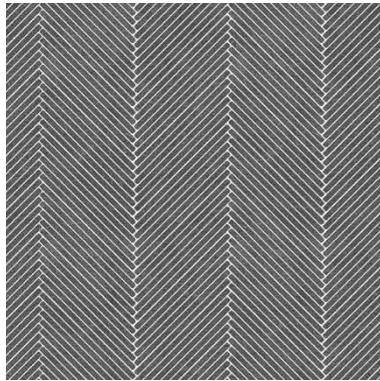
Dapple Crackle Tile



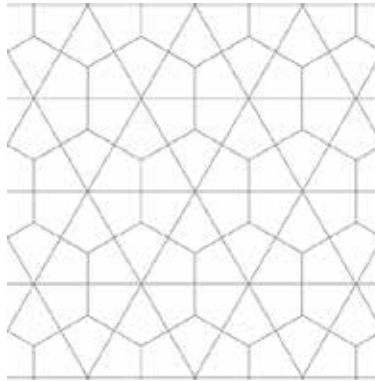
White Crackle Tile



Urban Cluster



Herringbone Cement



Geometry



Modern Victoria



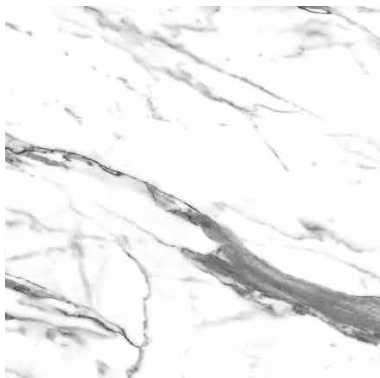
Casablanca



Maltese Ochre



Walnut Geometric



White Marble



Herringbone Whitewash



Stellate Blush

Vista splashbacks

Have you thought about a Vista splashback? They make a great style statement behind a sink or hob area and offer a practical alternative to traditional wall tiles with no messy installation or scrubbing grout clean. They go straight onto the wall in one smooth piece and fix in place with our Complete adhesive.

Affordable, hygienic and still looking fabulous in years to come, we have a stunning range to choose from. Whether you want to continue your look from worksurface to splashback or want a contrast, we've thought about it.

With brushed metals, geometric shapes, vintage inspiration, wood grains, granites and glossy acrylic splashbacks that look like glass, there is an abundance of choice so take a look.



Pictured right: Vista Constellation acrylic splashback.



Casablanca multi MDF



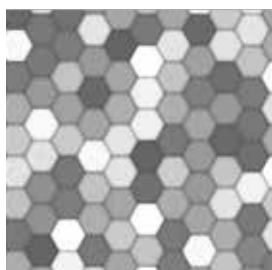
Vintage taupe MDF



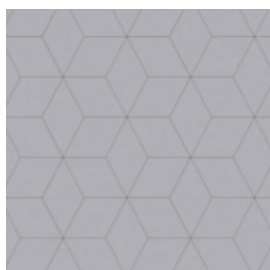
Casablanca grey MDF



Vintage grey MDF



Honeycomb MDF



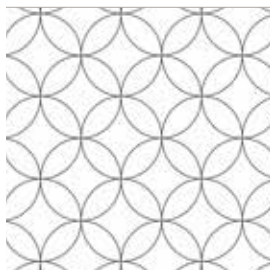
Blocked Hex dove MDF



Blocked Hex midnight MDF



Roulette Curves taupe MDF



Roulette Curves white MDF



Herringbone whitewash MDF



Herringbone natural MDF



London Brick MDF



Summer Palm MDF



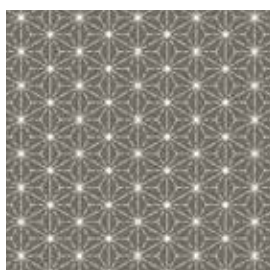
Golden Grove MDF



Inner City Ice Cloud Acrylic



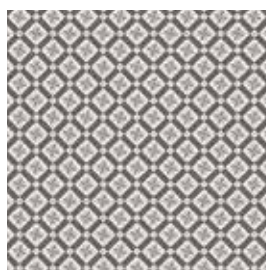
Kaleidoscope Cool Blue Acrylic



Constellation Acrylic



Inner City Ocean Grey Acrylic



Kaleidoscope Charcoal Grey Acrylic



Hazy Forest Acrylic



Brushed Copper Metal



Blanc Megeve Linear



Graphite Higliss



Mulberry Higliss



Brushed Aluminium Metal

Splashbacks and upstands should be fitted at least 50mm from the back of the appliance. Acrylic splashbacks are not suitable behind a gas hob unless a glass protector is used. Splashbacks are not suitable to be used behind free-standing appliances. Metal splashbacks should be earthed by an electrician.

See our installation instructions for full details.

Every effort has been made to achieve faithful representations of our products in this brochure, but due to printing limitations we recommend that samples of actual material are requested before purchasing.

For matching splashbacks see our matrix on page 47.

finishing touches

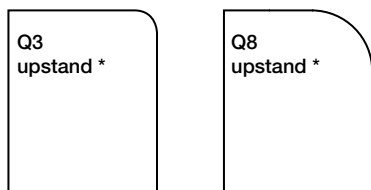
Small details make a big difference.

That's why every worksurface in the Omega range comes with a matching upstand. Upstands continue the surface decor up the wall to protect paintwork and create a seamlessly elegant finish.

Upstands are finished with the same Q3 or Q8 profile and are sealed in place with Complete coloured adhesive for a perfectly co-ordinated finish.

If you would like to continue your surface further up the wall then take a look at our range of matching and contrasting splashbacks.

Pictured right: Taros Gris worksurface and matching splashback in Ultramatt texture.



* Please view our matrix on page 47 to see which profile your chosen upstand has.





Taros Gris Ultramatt



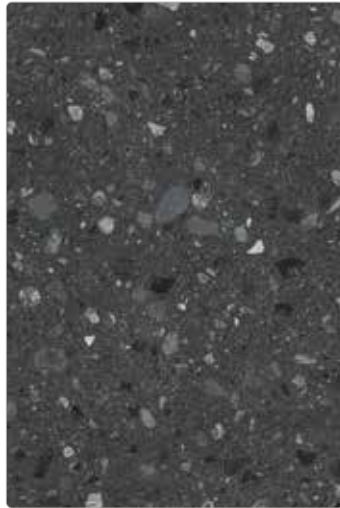
Lumiere Ultramatt



Doux Lime Quartz Fa



Grey Chalk Roche



Marine Terrazzo Granit



Ellis Stone Soft



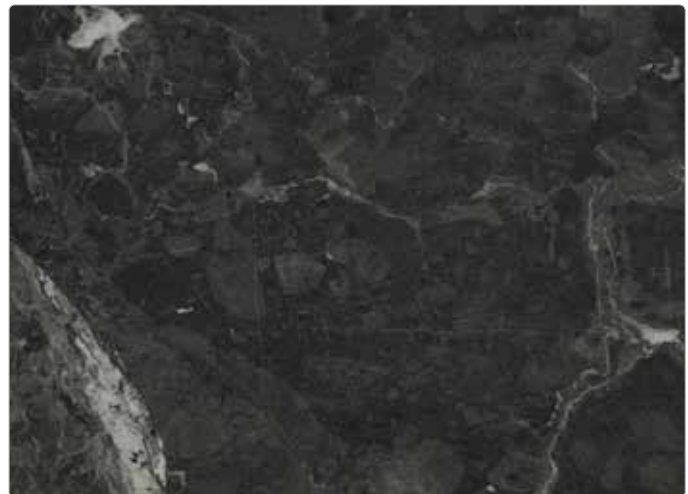
Mon Valley Fa



Murano Marble Fa



Bronze Marble Fa



Venetian Marble Fa



Paros Marble Ultramatt



Ice Stone fusion



Light Portland Real Stone



Urban Concrete Roche



Calcite Ultramatt



Urban Caldeira fusion



Slate Roche



Brasilia Roche



Cirrus Marble Higliss



Salento Stone Real Stone



Chene Gris Nature



Dartington Oak Nature



Dark Driftwood Nature



Silvered Oak Nature



Unburnished Grain Ultramatt



Block Broad Oak Nature



Cedarwood Fibril



Light Block Walnut Fa



Walnut Flame Fibril



Stamford Oak Ultramatt



Quebec Oak Ultramatt



Tobacco Oak Ultramatt



Silver Pebblestone Surf



Pewter Pebblestone Surf



Graphite Oak Ultramatt



Natural Blocked Oak Ultramatt



Ebony Stripwood Ultramatt



Lima Surf



Aticos Gold Surf



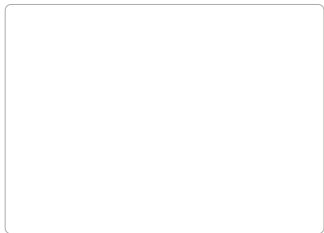
White Quartz Higliss



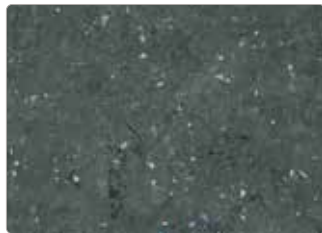
Vanilla Quartz Higliss



Noir Surf



Pure White Surf



Brasilia Quartz Higliss



Cinder Quartz Higliss



Midnight Surf



Black Quartz Higliss

availability chart

design	texture	adhesive colour	4100 x 600 x 22mm worksurface (finished 1 long edge) 22mm Square Edge	3000 x 900 x 22mm breakfast bar (finished 2 long & 1 short edge)	4100 x 600 x 38mm worksurface (finished 1 long edge) 38mm Square Edge	4100 x 665 x 38mm breakfast bar (finished 2 long edges)	3000 x 900 x 38mm breakfast bar (finished 2 long & 1 short edge)	4200 x 43mm edge edge	4200 x 28mm edge	3000 x 600 x 38mm worksurface 38mm Postformed	3000 x 900 x 38mm breakfast bar	4100 x 600 x 38mm worksurface	4100 x 665 x 38mm breakfast bar	4100 x 900 x 38mm breakfast bar	3000 x 600 x 8mm splashback	3000 x 600 x 9mm splashback	3000 x 600 x 4mm acrylic splashback	3000 x 100 x 20mm upstand
Black Quartz	higloss	jet black	•	•				•		•	•	•	•	•	•			•
Brasilia Quartz	higloss	basalt grey	•	•				•		•	•	•	•	•	•			•
White Quartz	higloss	ice white	•	•				•		**	•	•	•	•	•			*
Grey Chalk	roche	silver grey	•	•				•		•					•			•
Marine Terrazzo	granit	slate grey	•	•				•							•			•
Chene Gris	nature	mushroom	•	•				•							•			•
Dartington Oak	nature	oatmeal	•	•				•							•			•
Dark Driftwood	nature	mushroom	•	•				•							•			•
Ellis Stone	soft	pewter grey	•	•				•							•			•
Murano Marble	fa	mushroom	•	•				•							•			•
Lumiere	ultramatt	silver grey			•	•	•	•							•			•
Unburnished Grain	ultramatt	ivory			•	•	•	•							•			•
Salento Stone	real stone	pewter grey			•	•	•	•							•			•
Light Portland	real stone	silver grey			•	•	•	•							•			•
Block Broad Oak	nature	oatmeal			•	•	•	•							•			•
Silvered Oak	nature	mushroom			•	•	•	•							•			•
Doux Lime Quartz	fa	silver grey			•	•	•	•							•			•
Mon Valley	fa	mushroom			•	•	•	•							•			•
Brasilia	roche	basalt grey			•	•	•	•							•			•
Cirrus Marble	higloss	pewter grey			•	•	•	•							•			•
Cinder Quartz	higloss	chocolate								•	•	•	•	•	•			•
Vanilla Quartz	higloss	vanilla								•	•	•	•	•	•			•
Ebony Stripwood	ultramatt	chocolate								•	•	•	•	•	•			•
Graphite Oak	ultramatt	mushroom								•	•	•	•	•	•			•
Natural Blocked Oak	ultramatt	oatmeal								•	•	•	•	•	•			•
Quebec Oak	ultramatt	fudge								•	•	•	•	•	•			•
Stamford Oak	ultramatt	oatmeal								•	•	•	•	•	•			•
Tobacco Oak	ultramatt	mushroom								•	•	•	•	•	•			•
Taros Gris	ultramatt	silver grey								•	•	•	•	•	•			•
Calcite	ultramatt	ash grey								•	•	•	•	•	•			•
Paros Marble	ultramatt	ice white								•	•	•	•	•	•			•
Slate	roche	slate grey								•	•	•	•	•	•			•
Urban Concrete	roche	pewter grey								•	•	•	•	•	•			•
Ice Stone	fusion	silver grey								•	•	•	•	•	•			•
Urban Caldeira	fusion	mushroom								•	•	•	•	•	•			•
Cedarwood	fibril	oatmeal								•	•	•	•	•	•			*
Walnut Flame	fibril	chocolate								•	•	•	•	•	•			*
Aticos Gold	surf	ivory								•	•	•	•	•	•			•
Lima	surf	jet black								•	•	•	•	•	•			•
Midnight	surf	jet black								•	•	•	•	•	•			•
Noir	surf	jet black								•	•	•	•	•	•			•
Pewter Pebblestone	surf	basalt grey								•	•	•	•	•	•			•
Silver Pebblestone	surf	silver grey								•	•	•	•	•	•			•
Pure White	surf	ice white								**	•	•	•	•	•			*
Venetian Marble	fa	basalt grey								•	•	•	•	•	•			•
Bronze Marble	fa	chocolate								•	•	•	•	•	•			•
Light Blocked Walnut	fa	toffee								•	•	•	•	•	•			•

Splashbacks

All worksurfaces and splashbacks have a 3mm radius profile (Q3) unless otherwise indicated. * 8mm (Q8) ** 10mm (Q10)

design	material type	adhesive colour						
Casablanca multi	MDF	fudge						•
Casablanca grey	MDF	basalt grey						•
Vintage taupe	MDF	silver grey						•
Vintage grey	MDF	silver grey						•
Honeycomb	MDF	basalt grey						•
Roulette Curves white	MDF	ice white						•
Roulette Curves taupe	MDF	pewter grey						•
Blocked Hex dove	MDF	silver grey						•
Blocked Hex midnight	MDF	jet black						•
Herringbone natural	MDF	pewter grey						•
Herringbone whitewash	MDF	silver grey						•
London Brick	MDF	toffee/silver grey						•
Summer Palm	MDF	olive green						•
Golden Grove	MDF	slate grey						•
Inner City ice cloud	acrylic	silver grey						•
Inner City ocean grey	acrylic	silver grey						•
Kaleidoscope charcoal grey	acrylic	silver grey						•
Kaleidoscope cool blue	acrylic	silver grey						•
Constellation	acrylic	pewter grey						•
Hazy Forest	acrylic	basalt grey						•
Blanc Megeve	linear	ice white						•
Graphite	higloss	basalt grey						•
Mulberry	higloss							•
Brushed Copper	metal							•
Brushed Aluminium	metal							•

here to help

Choosing a new kitchen is an exciting time and we have all the tools you need.

You want to get your new kitchen right and we want to help.

Head to our Design Studio online to try out your favourite decor combinations in a range of kitchen settings by placing worksurface, splashback and upstand designs.

Then, you can order samples from our website and find a retailer near you.

Visit www.bushboard.co.uk/design-studio



what to do next!

order brochures I order free samples I create with our design studio
find inspiration for your home I find a retailer near you

www.bushboard.co.uk



Sampling

Choose up to six of your favourite designs to sample for free!

Use the sampling service to see how Options laminates look and feel in real life and plan your perfect kitchen combination.

Your retailer can request these for you or you can order them directly to your home by visiting our website.

www.bushboard.co.uk



Our retail partners

Thousands of retail partners proudly stock the Options range and are waiting to help you with your new kitchen plans. Experts there can give you advice on design and installation as you explore the full range of Options samples in store.

Enter your postcode into our Find a Retailer search page to find your nearest locations.

www.bushboard.co.uk/retailers



Customer Support Team

Need to talk?

Our Customer Support Team is here to help.

01933 232 272

business.support@bushboard.co.uk



[@bushboard](https://twitter.com/bushboard)



facebook.com/bushboard



[@bushboard](https://www.instagram.com/bushboard)



[Bushboard2353](https://www.pinterest.com/Bushboard2353)



[BushboardLtd](https://www.youtube.com/BushboardLtd)

more great reasons

complete

The professional worktop jointing adhesive

Exclusive 3 year joint guarantee

Use Complete for peace of mind and an exclusive 3 year joint guarantee.

Get the final installation right by asking your installer to use Complete, our bespoke adhesive and sealant.

Complete bonds and seals worksurfaces, upstands and splashbacks and is backed by our exclusive 3 year guarantee on joints, giving you superb performance at a modest price point.

Available in a wide choice of colours designed to complement our Omega surfaces, Complete will give you the perfect watertight result.

Full joint guarantee details are available on our website or from the Business Support Team.

The team can offer advice on installing and maintaining your Omega surfaces. The Installation, Care & Maintenance leaflet is included in every worksurface and is also available online.

Bushboard offer Complete sealant colours to complement our full range of worksurfaces. The sealant colours in our matrix on page 47 are our suggestions, feel free to use any colour from the selection that you deem more suitable to coordinate with your chosen surface.



Jet Black

Basalt Grey

Slate Grey

Pewter Grey

Silver Grey

Ash Grey

Ice White

Ivory

Vanilla

Oatmeal

Fudge

Mushroom

Chestnut

Chocolate

to buy Bushboard

At Bushboard we're passionate about everything we do and we're always here to help.

We invest heavily in high quality manufacturing and work with the best materials and suppliers. Our values of partnership, loyalty and an ethical approach mean we do what's right; that's why we've been around since the 1930s.

Our commitment to quality management is proven by our ISO 9001 certification and our ISO 14001 is testament to our passion for reducing our environmental impact.

Even after Bushboard products arrive in your home we strive to assure a quality installation. Our Complete adhesive and sealant range is designed to make the installer's life easier and assure a quality long-lasting installation for you.

Quality

Manufacturing with the finest materials is what gives Bushboard worksurfaces their signature quality. While beautiful and stylish to look at, they are also constructed to cope with the wear and tear of everyday living. Independently tested to BS/EN438, your Bushboard worksurface is designed to withstand knocks, abrasions, chemicals, cigarette burns, steam, stains from juice, tea, wine or coffee. It is also highly resistant to heat, although we recommend the use of a protective pad as saucepan bottoms can become extremely hot.

Omega worksurfaces are designed to perform below the surface too; a resin impregnated moisture resistant barrier combines with Bushboard's unique 'Tekseal' cast resin drip-edge to completely seal the underside against moisture penetration from everyday spills. However, it is really important that spills are mopped up immediately to reduce unnecessary damage.

Care & Maintenance

Bushboard worksurfaces are so easy to maintain. On a day-to-day basis all you need to do is wipe them down with a moist cloth and your favourite mild detergent. For more stubborn marks such as fruit juice and coffee, leave the detergent to soak on the surface for a little while before rinsing thoroughly. Obviously, your worksurface can become damaged if mistreated, so we recommend some sensible measures like placing hot pans or casserole dishes on protective mats and mopping up spills quickly. As with any laminate worksurface, you should avoid chopping, cutting or placing hot items directly on to the surface.

Textures

Premium textures need a little more care and attention. Please remember they are fashionable finishes and tend to show marks and scratches more easily with everyday use. This is also true of darker, plainer and matt finishes.



Bushboard worksurfaces are guaranteed for their lifetime. Bushboard will make good by repair and/or replacement (at its discretion) any Omega product of its manufacture which can be shown to have failed by reason of defects in its manufacture, subject to fair wear and tear, provided the product has been installed and used in accordance with the manufacturer's instructions and that the products are used for their intended purpose. Proof of date and place of purchase required. This guarantee is in addition to your statutory rights as a consumer and does not affect your rights in any way.

www.bushboard.co.uk

tel: 01933 232 272
email: businesssupport@bushboard.co.uk



@bushboard
www.facebook.com/bushboard
@bushboard
Bushboard2352
BushboardLtd

Bushboard Ltd
9-29 Rixon Road
Wellingborough
NN8 4BA

The company reserves the right to change specifications at any time, without notice. Every effort has been made to achieve faithful representations of our products in this brochure, but due to printing limitations we recommend that samples of actual material are requested before purchasing.

www.bushboard.co.uk

01933 232272

follow us on our social media channels...

